



"Strengthening Circular Economy  
and Valorisation of side-streams  
in RAS Aquaculture"  
**AQUALOOP International Conference**

**Interreg**  Co-funded by  
the European Union

South Baltic

*aqua  
loop*

# The value of project participation in business development

Bremerhaven, Germany | 25 February 2026  
Speaker: Annette Løttrup-Moore

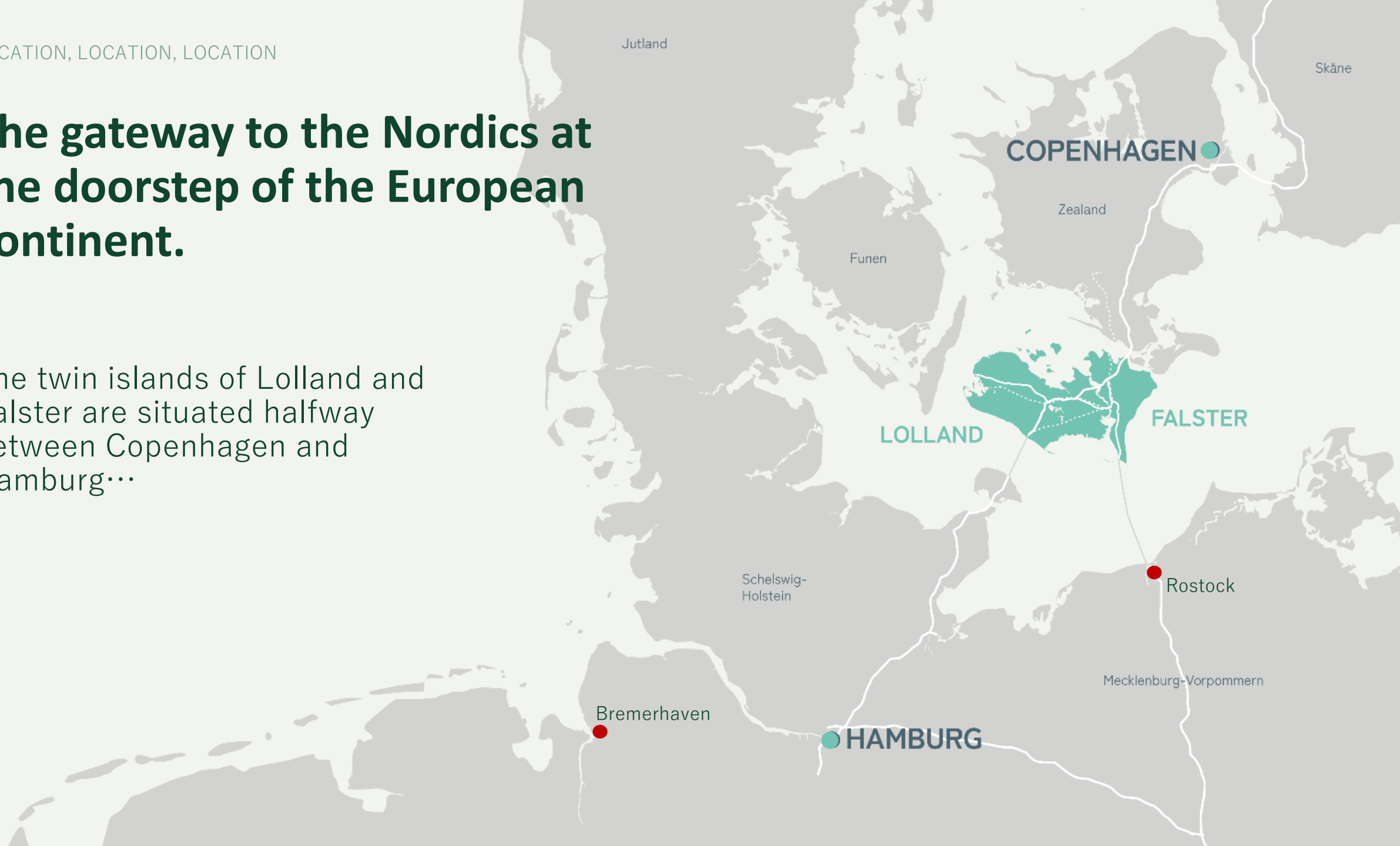
@AquaLoop   
@AquaLoop Interreg SB 

aqualoop.edu.pl

LOCATION, LOCATION, LOCATION

# The gateway to the Nordics at the doorstep of the European continent.

The twin islands of Lolland and Falster are situated halfway between Copenhagen and Hamburg...



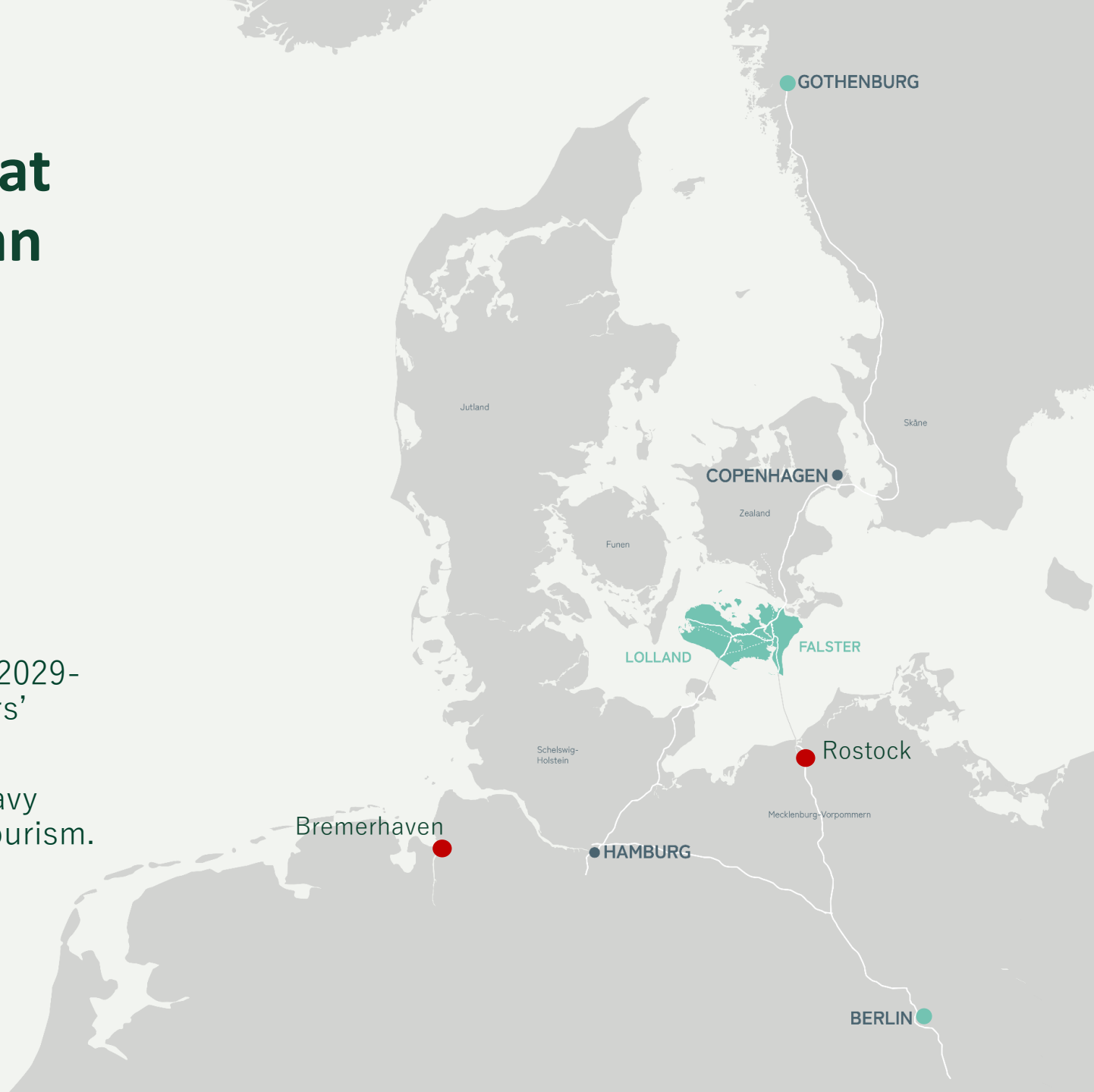
LOCATION, LOCATION, LOCATION

# The gateway to the Nordics at the doorstep of the European continent.

...But also, halfway between Gothenburg and Berlin!

Following the completion of the Femern tunnel in 2029-ish, 12 million consumers will be within a few hours' reach.

This presents great potential for investment in heavy industry, transport and logistics, food, retail and tourism.



# The 5 core tasks of Business Lolland-Falster



Development of  
new and  
existing  
businesses



Attraction of  
businesses and  
investments



Junction point  
for business-  
and tourism  
development



Safeguarding  
the interests of  
businesses and  
authorities



Management of  
the largest  
business  
network in  
Lolland-Falster  
(>500 members)

# Innovation is in our blood



**ZEELAND-LOLLAND-FALSTER**  
Green Gas Pipeline connecting  
Lolland-Falster to the national grid

**OREHOVED**  
New Storstrøms Bridge  
Commercial Harbour

**THE 'APPLE ISLANDS'**  
Fruit production

**STUBBEKØBING**  
Commercial Harbour  
'Grønsund Havhave'  
ReefCircular pilot site

**TÅRS**  
Potential site for RAS  
production

**KRAGENÆS**  
Harbour

**FALSTER**  
Data Centre  
Biogas Plant

**NAKSKOV**  
Commercial Harbour  
Sugar Factory Est. 1882  
VESTAS: Production of 115m  
blades

**BANDHOLM**  
Harbour

**SAKSKØBING**  
Harbour  
Danish Quinoa Group  
Intercrop Values

**HESNÆS**  
Harbour

Technical Water from Wastewater  
Biofuel Technology: Bio methanol  
Hveiti Ingredients: Wheat refinery  
European Energy: PtX (E-  
methanol)  
WPU: Pyrolysis  
Bio Clean Carbon: Wastewater  
Treatment, pilot sites

**ABED**  
Biogas Plant

**MARIBO**  
Business Lolland-  
Falster

**RADSTED**  
329 MWp PV energy park

**NYKØBING F**  
Commercial Harbour  
Sugar Factory Est. 1884  
National Food Summit  
Guldborgsund Municipality:  
TETRAS demo RAS plant  
AquaLoop Partner  
BioEconomy Conference

**HOLEBY**  
Vikima Seed  
DLF Beet Seed  
LF Airport

**KETTINGE**  
Expansion of Biogas Plant  
Potential PtX

*A number RE projects (solar/wind)  
are under implementation across  
the region enabling easy access to  
renewable energy in any location.*

*Local farmers are cultivating  
200,000 Ha of agricultural land,  
producing high quality crops.*

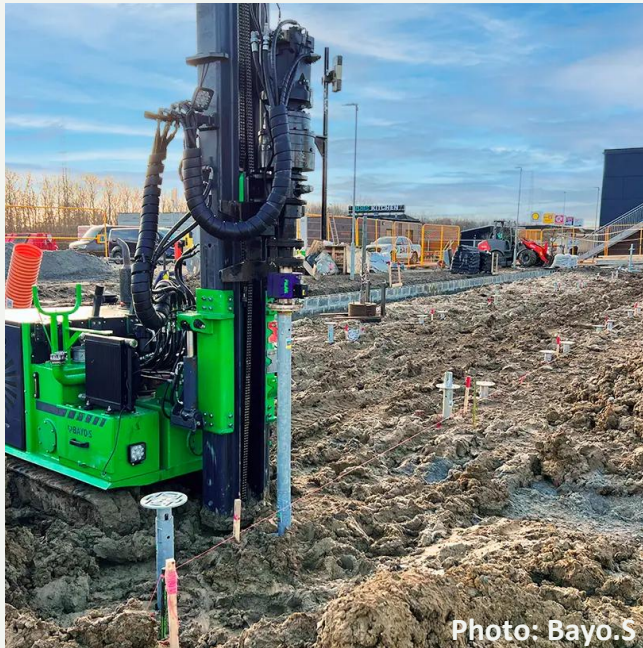
**The Gedser Turbine**

**GEDSER**  
Commercial Harbour  
Potential site for RAS  
production

**RØDSAND II WIND PARK**  
90 Turbines  
207 MW

**NYSTED WIND  
PARK**  
72 Turbines  
161 MW

# Business through projects and projects through business..



Lolle Frugt  
Bayo.S Screw Foundations  
Hemp House  
Nordzucker  
-  
Regenerative Tourism:  
Frederiksdal  
Kitesurf & Paddle Lolland

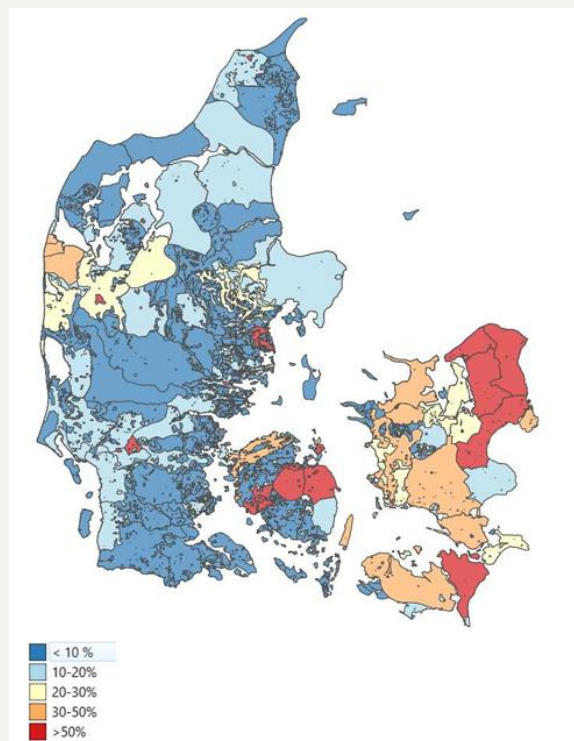


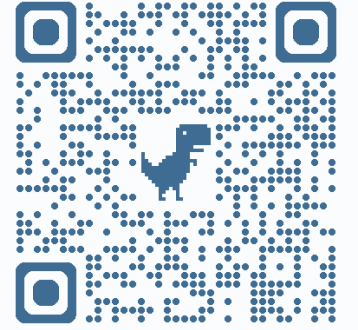


# OTHER RESULTS DERIVED FROM TETRAS PARTICIPATION



**Fresh water resources?**  
**Innovation and startups?**  
**Wild catch, sea cages or RAS?**  
**Labelling?**





## Contacts

BUSINESS LOLLAND-FALSTER  
Kidnakken 7, DK-4930 Maribo

Tlf: +45 7022 8901  
info@businesslf.dk

### References:

<https://businesslf.dk/>

<https://submariner-network.eu/tetras-final-output/>

<https://www.geus.dk/Media/A/9/Genberegning%20af%20kvantitativ%20tilstand%202021%20januar.pdf>

<https://www.linkedin.com/company/bio-clean-carbon/posts/?feedView=all>